

Introduction

From an esoteric point of view your birth chart is a portrait of your soul's intention for this lifetime, the lessons to be learned, qualities to develop, problems to be resolved, service to be rendered. From that perspective, the choices one makes in one's daily life have reverberations that may last beyond even this lifetime.

This report is written to help you clarify your lessons and goals, illuminate your struggles, and encourage you to move in the direction of your true purposes.

The best to you on your journey...

Sun	28	Lib	29	Pluto	21	Lib	58
Moon	28	Pis	09	N. Node	17	Leo	33
Mercury	19	Sco	48	Asc.	13	Sag	44
Venus	19	Vir	36	MC	28	Vir	27
Mars	6	Sag	48	2nd cusp	16	Cap	23
Jupiter	28	Vir	52	3rd cusp	23	Aqu	02
Saturn	3	Lib	41	5th cusp	28	Ari	06
Uranus	24	Sco	12	6th cusp	22	Tau	21
Neptune	20	Sag	35				

Tropical Placidus Daylight Savings Time observed

GMT: 17:46:00 Time Zone: 8 hours West

Lat. and Long. of birth: 34 N 03 118 W 15

Aspects and orbs:

Conjunction	: 5 Deg 00 Min	Trine	: 4 Deg 00 Min
Opposition	: 5 Deg 00 Min	Sextile	: 3 Deg 00 Min
Square	: 4 Deg 00 Min	Quincunx	: 3 Deg 00 Min
Conjunct Asc:	3 Deg 00 Min Above,		5 Deg 00 Min Below

Marcha Fox
B.S. Physics, Dipl. IAA
whobeda@valkyrieastrology.com
ValkyrieAstrology.com
"Timing is Everything"

Chapter 1: The Moon

The placement of the Moon in your birth chart is very significant from a karmic perspective, as it indicates the accumulated karmic tendencies, both positive and negative, that you carry from your past incarnated experiences on earth.

While the Sun reveals your intended purposes and lessons for this present life cycle, the MOON represents what you have already done and developed, hence, what is instinctive and natural to you, and what you tend to do over and over again. Your childhood is also reflected in the Moon's placement, as it is through those childhood circumstances that any unresolved past-life issues are re-stimulated. Your subconscious predisposition is indicated by the Moon's position. It is the psychic imprint of the past. The nodes of the Moon describe behavior patterns from the past, as well as delineating a direction out of outworn or overdone behaviors and habits.

Moon in Pisces

When under stress your instinctive reaction is apt to be passive non-resistance, "going with the flow" and simply allowing the situation to resolve itself one way or another without any overt action on your part.

This deeply ingrained, fluid, and rather passive attitude can lead you to abdicate responsibility for your own life, evading the need to make definite commitments and decisions and allowing other people or outside events to determine how your life will proceed. Even if you are a fighter or a "go-getter" (as indicated by other astrological factors in your chart), deep down you have a very tender, soft, and somewhat malleable feeling nature. You are extremely sensitive and need to learn to listen to, honor, and trust your subtle awareness and intuitions and then act upon them. You also need to be in a relatively peaceful, "clean" psychic and emotional atmosphere, for you quickly absorb the psychic energies in your environment.



The whole realm of the mystical - dreams, inspiration and soul - is very much your element. Your acute psychic sensitivity and your rich creative imagination are highly developed; these aspects of your nature which have been cultivated in your incarnational past. At times you may feel that you are overly sensitive or that your imagination (in the form of nebulous fears and worries) is overwhelming, and it is very important for you to find ways to balance your emotions. Quiet times for reflection or meditation, being in or near water, or playing your favorite pieces of music can be very helpful in this regard. You have a particular affinity for music, but also for the other arts as well.

Past lifetimes as a priest or minister to the disadvantaged and needy may carry over into your present life as a desire to care for and comfort those in need. You tend to identify with those who are weak and vulnerable, or who have been victimized or discarded by society, and to feel great compassion for any suffering being. You have an underlying urge for self-sacrifice which

can incline you to become a martyr or to be taken sorry advantage of when your sympathies have been stirred. It may be hard for you to say "no" or "that's not my problem", because you tend to get psychically and emotionally enmeshed in other peoples lives and troubles, often to a degree that is not healthy for you. It may be hard for you to separate yourself or to draw clear emotional boundaries. You often let other people grow overly dependent on you - or you on them. Because of a deep-seeded passivity, you may believe on an unconscious level that you are essentially helpless and vulnerable, in need of being rescued or "saved" (by another person, a drink, your religion...). At its least appealing, this can lead to continual bids for sympathy from other people, even illnesses which at their roots are expressions of the wish to be taken care of by someone else. As you learn ways to nurture and care for yourself and to meet your own needs, you would be less tempted to fall into that pattern.

At your very best you have a refined, spiritual sensitivity, great empathy, and a feeling of kinship which connects you to all of life.

Moon Opposition Jupiter:

Prior lifetimes of great ease, luxury and what is considered "the good life" have engendered in you various tendencies which carry over into your present life cycle: a certain optimism, a taken-for-granted faith that whatever you need will be provided, and the inclination to generously and easily share whatever good fortune you possess. When acting from these instincts, you are very open and freehanded, though perhaps indiscriminately and extravagantly so. Out of this good-hearted, brotherly attitude you may support people or causes without thoroughly investigating them. Also from your incarnational past, there is the theme of having a big, warm family, many friends, and a wide range of social contacts. You were popular and influential in a social sense. An involvement in politics, law and/or religion (to the extent that the church dictated and organized people's lives) is indicated, and this carries over into the present as a desire for the same popularity and favor you once enjoyed. The desire to "do good" and contribute to the betterment of your fellow man is a positive expression of this, and you do indeed possess an instinctive knowledge of how to appeal to the masses. However, beware of taking shortcuts, acting from greed, or trying to get something with relatively no effort. Also, trying to "buy" friends or gain a superficial popularity in order to puff up your own sense of importance are negative potentials. A tendency towards excess indulgence in rich living, good times, partying, food, drink or splurging on "only the best", needs to be held in check. If you manifest problems with your weight, water-retention, liver or gall bladder there may be karmic results of wastefulness and over consumption, the seeds of which were sown in your incarnational past. Moderation and temperance are needed, especially with fats and alcohol.

North Node in Leo:

In your incarnational past, the needs of the group or collective took precedence over your individual wants and needs, and while you perhaps enjoyed the sense of belonging and comradeship, your individuality was submerged. Your growth direction now is to become a strong individual in your own right, developing your own creative talents and abilities.

North Node in 8th house:

You may find that your past tendency is particularly active in the arena of money, material, and gaining personal assets and tangible security. Your growth direction includes becoming more willing to operate from an awareness of others' well being and a willingness to freely share.

Chapter 2: The Sun

The Sun in your birth chart represents the primary creative thrust for this lifetime, those qualities you are to develop (or further develop) and express, and your current life focus. This may be in harmony with your instincts and your emotional habits, or along completely different lines. The Sun represents your conscious identity in this lifetime.

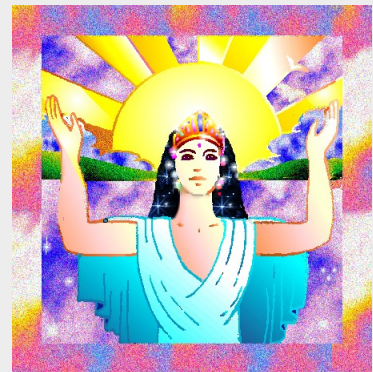
Sun in Libra

In this lifetime your guiding principle or underlying motivation is the golden mean, the ideal state of balance and symmetry, the moderate course that avoids extremes, the happy medium.

An essential aspect of your path involves bringing together and harmonizing opposing energies, finding a balance and a meeting point between them and creating bridges so that interrelationship is possible.

The concept of relationship is key, whether it is the relationship of colors in a painting, between objects on the mantel piece, between nations or between two people. You have a highly developed sense of style or harmonious arrangement, of correct, appropriate, and beautiful relationships. Aesthetics are very important to you in your surroundings, in people, in the manner in which things are done. You are artful (in both the positive and negative sense) in the way you approach life.

In your personal relations you excel in the art of compromise and diplomacy. Your subtle touch and fine tuning regarding what is needed to maintain harmony (or at least a continued flow of interaction) between the two parties serves you well in this regard. At your best, you are thoughtful and considerate, tactful, sweet, and impeccable in your manners. You view things from a "we" perspective rather than simply I/Me. However, your desire to create unity or maintain agreeable relations inclines you to avoid stating the naked truth if you think it will be unpopular. You may abhor conflict, and at your worst you will compromise the truth or your own integrity in order to avoid it. You can be artful in the sense of crafty, machinating, and disingenuous. You can be charming in a manipulative way. Perhaps you do not out-and-out lie but you will prettify the truth to make it more acceptable, more palatable. Going solo is not your path in life, and because of your need for others (or at least one significant other), you may lack confidence of your own.



You are keenly aware of polarities, the yin/yang of life, and of "the other" (the other side of the coin, the other person, the other possibilities, the opposing point of view), and you have both the gift and the desire to blend the two, a synthesis which includes both opinions, in your own center. Your need for a consensus and for others' approval, can make you indecisive, uncertain of yourself, and disinclined to make waves. But although you will accommodate and compromise a great deal, you do have a strong inner sense of fairness and balance. Reciprocity and equality in relationships are so important to you that you will usually take a stand when your sense of fairness is being violated.

An idealist at heart, it is sometimes hard for you to accept that life is not always fair and that it has its dirty side, its ugliness. And the fact that you too have emotions and impulses that are not beautiful or "nice" is something you find difficult to accept. You tend to hold yourself as well as others to a certain code of conduct, to your ideal image of how people should be, even when this does not correlate with reality. Emotional honesty is not your strong point. Seeking the ideal of love, harmony, and beauty and trying to live it is. Bringing people together, acting as a moderator or working public relations utilizes your strengths. With your concern for justice, and airing both sides of an issue, law may attract you. (Any field involving art or aesthetics does also). Behind any of these choices are the questions of balance and of blending or joining opposing forces -and these are your lifelong lessons.

You tend to define yourself in terms of the other person, and can lack a strong sense of self outside of your relationship to significant others.

Sun Quincunx Moon:

In this lifetime, to fulfill yourself as an individual, you need to develop and express yourself along very different lines than you have in the past. Thus, in many instances your conscious purposes and inclinations are rather at odds with the deeper subconscious beliefs, patterns and the familiar ways of being which are carry-overs from your incarnational past. Comparing the interpretation of your Moon sign and aspects in Chapter One and the interpretation of your Sun sign and aspects in Chapter 2, you will notice definite opposing or conflicting tendencies or inconsistencies. You will need to say yes to both of these sides of yourself, even though they may seem to pull you in different directions, for denying either side will keep you locked in conflict with yourself or see-sawing between extremes. However, it is also important for you to bring to light those emotionally-based habits, prejudices, and "needs" which you hold on to and which may be interfering with your current needs and requirements for growth.

Chapter 3: Rising Sign

The point that was on the eastern horizon at the moment of your birth is called the ASCENDANT, or rising sign. While the Sun describes your conscious direction and current life focus, and the Moon your subconscious predisposition and past, the Ascendant indicates a way of being that transcends and embraces past, present, and future. It describes the way you engage and merge with the outer world and how you bring through into life the energies depicted by the

Sun, the Moon, and the rest of your birth chart. Everything is filtered through the Ascendant from an esoteric point of view. It indicates your soul's function and thus a key part of your destiny.

Sagittarius Rising:

Faith, belief and the ability to foresee and envision the future or "what could be" are essential elements of your soul function. You may well be ahead of your time or at the fore front of coming trends and movements in the collective. You are a seeker, one who searches for the overview, the larger pattern, or a broad, over-arching philosophy of life - and also a teacher who conveys that vision or broadcasts it in some way. Your ruling planet is Jupiter.

Sagittarius Rising and Jupiter in Virgo:

Your Jupiter in Virgo suggests that in addition to your vision and your ability to see the big picture, you have highly developed critical and intellectual faculties. You believe very strongly in education and lifelong learning. You are meant to translate your philosophical beliefs into concrete, practical service, and are particularly suited to education, medicine, law - or somehow combining these together. (Teaching about health and "natural laws", for instance).

Chapter 4: Saturn, Your Achilles Heel

Karmically considered, the placement of Saturn in your birth chart indicates where your energetic blockages, weaknesses and fears lie, and the areas of your life where the most concentrated effort and discipline will be required to master and overcome them. Yet it also points to the aspects of life which can become your greatest strength if you are willing to face your fears and difficulties honestly, and work with them patiently.

Saturn in Libra

Finding a balance in your life between participating in a close relationship, and attending to your own requirements and your own personal development, is a crucial issue for you in this lifetime, and not a particularly easy one. For you, relationships with people usually come at a rather steep cost, and they may seem more of a burden or more work than mutual pleasure. You may thus enter into personal relationships cautiously and reluctantly, or you may reserve some part of yourself and, in effect, refuse to be fully engaged. Expecting, at some level, to be disappointed, you opt not to invest yourself entirely, and then wonder why you do not feel fulfilled, why there is a vacuum. At other times, you may find yourself taking on much more than your fair share in your partnerships, and can even martyr yourself for the sake of a friendship, marriage or other cooperative endeavor. Because of the frustration and disappointment you experience in this realm of your life (or at least in certain key



relationships), you will be thrown back on your own resources in order to truly become a whole person capable of relating to other individuals. What you seek from or through the other, you will have to find or develop from within.

Saturn in 10th house:

Many of your challenges and tests come to you through your pursuit of professional accomplishment, power and influence in the world. Your progress in your career may be excruciatingly slow, repeatedly blocked by setbacks. However, over time, you may well rise to a position of considerable responsibility and authority, if you know how to follow the rules and to work within the limits of the world. Deviating from the straight and narrow or trying to take short cuts will have definite negative consequences, and in this aspect of your life the Universe is apt to be very exacting and unforgiving. You pay for any mistakes you make, often publicly. While others may seem to be able to fudge things or rely on luck, you simply will not be able to. Unless you pay your dues, you will not advance as you desire.

How you handle power and authority is a major karmic question for you in this lifetime. On another level, dealing with powerful or disapproving authority figures (possibly a parent, a Boss or even an abstract one such as the government) is also indicated. Very likely, you will have to forge your own path in life in the shadow of one of these.

Chapter 5: The Hard Aspects

The following is a description of your MAJOR LIFE CHALLENGES, both in terms of energies you are to learn to develop and express in a positive way, and those which are the result of struggles and unresolved karmic issues which you have brought into this life.

Mercury Conjunct Uranus:

Your unusually inventive, creative, restless, and original mind can have both advantages and disadvantages. If you can balance or overcome tendencies toward extreme restlessness and going off on mental tangents, you have gifts of a creative genius, inspiration, and a direct awareness of truth which is apt to descend upon you like lightening, in terms of suddenly seeing the solution to some problem or grasping an idea without needing a methodical explanation. You simply have an intuitive "knowing" about something. You can be a channel for new information and ideas. A certain rebelliousness and dislike of formality and "tradition for tradition's sake" is an aspect of your mental patterning which may prevent you from taking advantage of the wisdom of the past. Often, you will "reinvent the wheel", or make changes simply for the sake of change, not necessarily to improve upon the old but because in your mind "new" or "different" is superior to the past. Your mind is very future oriented and progressive but one way this manifests is in a kind of nervous, erratic, unsettled way of being which is always moving on, unable to be present or stay put.

Centering meditations and other techniques you find helpful to calm and stabilize you are necessary on a regular basis. Regular contact with the earth, through gardening or walking for instance, can be very helpful also. The development of a regular rhythm and routine, daily rituals which give continuity and a form of stability, are also enormously helpful.

Stones that promote feelings of peace and sooth the nerves include rose quartz and jade.

Others that may benefit or inspire you include clear quartz, larimar, and opals. Avoiding caffeine and other stimulants may be necessary too, at least from time to time.

Venus Square Neptune:

You are in love with love, and your path in life, as well as many of your challenges, involves understanding and experiencing the realm of the heart. Irresistibly romantic, you have the soul of a poet, a devotee, and above all, a lover.

In its earliest stages of development, this pattern within inclines you to be easily seduced, overcome with emotional yearning and infatuation, unable to discern the motives and intentions of others, particularly if the other person appears beautiful, soft, innocent, or in need. You can confuse pity with love. You see the angel in the other person, and are deeply disillusioned to discover the selfishness or sordidness.

Further on, your relationship with spirit may become paramount in your life, a relationship between lover and beloved. Your path is then what the Hindus refer to as "bhakti" -spiritual devotion and service. This higher octave of love and widening of the heart's affections can be very beautiful, but herein lies the crux of some of your very human problems: "Where are the limits or boundaries in relationships?" "Are there conditions in love, or is unconditional love the ideal?". Sorting out these questions and similar ones are part of what your life is about.

Mars SemiSquare Pluto:

In this lifetime you must confront the nature of power, and you have the opportunity to transform your relationship to power, clear away deep-seated anger and resentment, and release karmic patterns of perpetrator/victim.

If, in your past, you have been the victim of aggression, ruthless force, or misdirected male energy - you may subconsciously fear or even hate men, have great mistrust of people in power or experience problems in sexual relationships (the arena where power/fear dynamics are often most apparent). In addition, you are prone to self-repression, either of anger or of your own strength. If you have very little energy, consider yourself a weak person, or become extremely uncomfortable when others express any anger, you may be holding down a great deal of hostility. Or, you may be angry all of the time "for no reason". The question of appropriate expression of these intense energies is a delicate one. While repressing them can wreak havoc on your health and sense of well-being, you do not want to unload the deep rage of centuries on innocent people. You may hold your anger or aggression back not only because you fear

repercussions (you may have been bludgeoned to a pulp in the past), but also because you sense that whatever is triggering your emotions in the present is not the real problem. In a word, you overreact. (Wanting to kill someone because they forgot to walk the dog is an overreaction).

On the other hand, you may carry an immense burden of guilt because you have been the one who misused your power, strength and/or sexual energies in the past.

Another way you may be expressing this energy is to be intensely and compulsively competitive, acting as if each and every event is a mighty struggle for supremacy, a contest with life or death consequences that you **MUST WIN** at all costs. You may become compulsively active and productive and driven to "succeed" at all costs. This type of thinking and being creates great stress on your physical, emotional, and spiritual bodies. Very likely it will also have a negative impact on all of your relationships. You will make a lot of enemies and actually force people to turn against you and bring you to your knees. Ruthlessness attracts ruthlessness.

Coming into balance with all of this is a major challenge. Finding a safe place to explore your war-like, destructive, and sadistic self can help. Another key is becoming sufficiently detached so that you can feel and acknowledge all of these energies, and choose when and how to express them without being "taken over" by them. If you are willing to become conscious, you can actually become a great force for good, and can heal and release some very deep wounds you have carried for a long time.

Chapter 6: Soft Aspects

The following is a description of your GIFTS and STRENGTHS which can help you work with your major life challenges. These are abilities and qualities of heart, mind, and soul which are quite natural to you. You probably take them for granted. Because these represent the lines of least resistance for you, you may rely too much upon them at times; hence, there are some cautions suggested. Still, these are the areas where good flows into your life and/or where you have considerable inner resources.

Moon Trine Uranus:

You can tolerate a great deal of unpredictability and insecurity (in the sense of the unknowns in your outer circumstances), and thus you are more willing than most to take risks. You have a keen sense of adventure. Your ability to harmoniously adapt to changes and unexpected twists of fate is one of your assets, as is your receptivity to anything new, your willingness to experiment, and your ability to completely alter your direction based on new information and the needs of the moment. You stay open to possibilities no matter how wild or far-fetched they may seem to more conservative folks, and thus you could easily earn the reputation of being a bit wacky. Your natural inclination to pursue the non-traditional or unexplored path is apt to bring you benefits. At the very least, yours is an unusual, varied, and exciting life, and sometimes includes extraordinary discoveries. Also, you navigate through life using your intuition,

inspiration, and inner impulses to guide you (rather than some pre-planned formula for living) and this will work well for you, as your intuition is sharp and clear and relatively undistorted.

Mercury Sextile Venus:

There is a harmonious coordination between your mind and heart, between your intellect and your emotions. Intellectually, you are drawn to the study of the arts and the art of understanding and relating to people. Public relations or bringing people together, in some way, is an area for which you are naturally suited.

You also have a wonderful sense of form and design, of artistic arrangement, of how things fit together pleasingly and gracefully. Whatever you do is done with style and aesthetic appeal. However, you can spend too much time and energy on the superficial aspects of fashion and personal adornment, cosmetic appearances, light socializing and entertaining but frivolous pursuits.

Your speaking, writing, or singing voice is one of your gifts, and you might choose to wear or carry certain gemstones to heighten this ability, such as golden beryl, lapis lazuli, clear quartz crystal or emerald.

Jupiter Conjunct Saturn:

You have a well-developed understanding of how the larger systems of the world operate, and how to succeed within the confines and limitations of the mundane world. Business on a large scale, the law, financial principles, all of these could be your forte. Your ability to make long-range plans and goals, and then to be consistent in implementing those plans is an important asset. You have vision and optimism combined with pragmatism.

Blessings, help, guidance and strength will come to you from elders with a particular mentor or grandfather figure being especially influential.

Neptune Sextile Pluto:

Collectively, this is a time in history that enables you and those of your generation to advance spiritually through a heightened awareness of the invisible and intangible realms. A rebirth of spirituality through direct contact with higher forces is occurring in this generation. This contact takes many, many forms, including a compelling interest in life beyond death. You may or may not have a personal involvement with this, as it is a group karma rather than a primarily personal one.