

# **Sweetheart *Astrological Reports***

**Brad Pitt**

and

**Angelina Jolie**



**[www.ValkyrieAstrology.com](http://www.ValkyrieAstrology.com)**

## ***Table of Contents***

His Natal Chart Report.....	3
Her Natal Chart Report .....	16
Cosmo-Compatibility Report.....	27

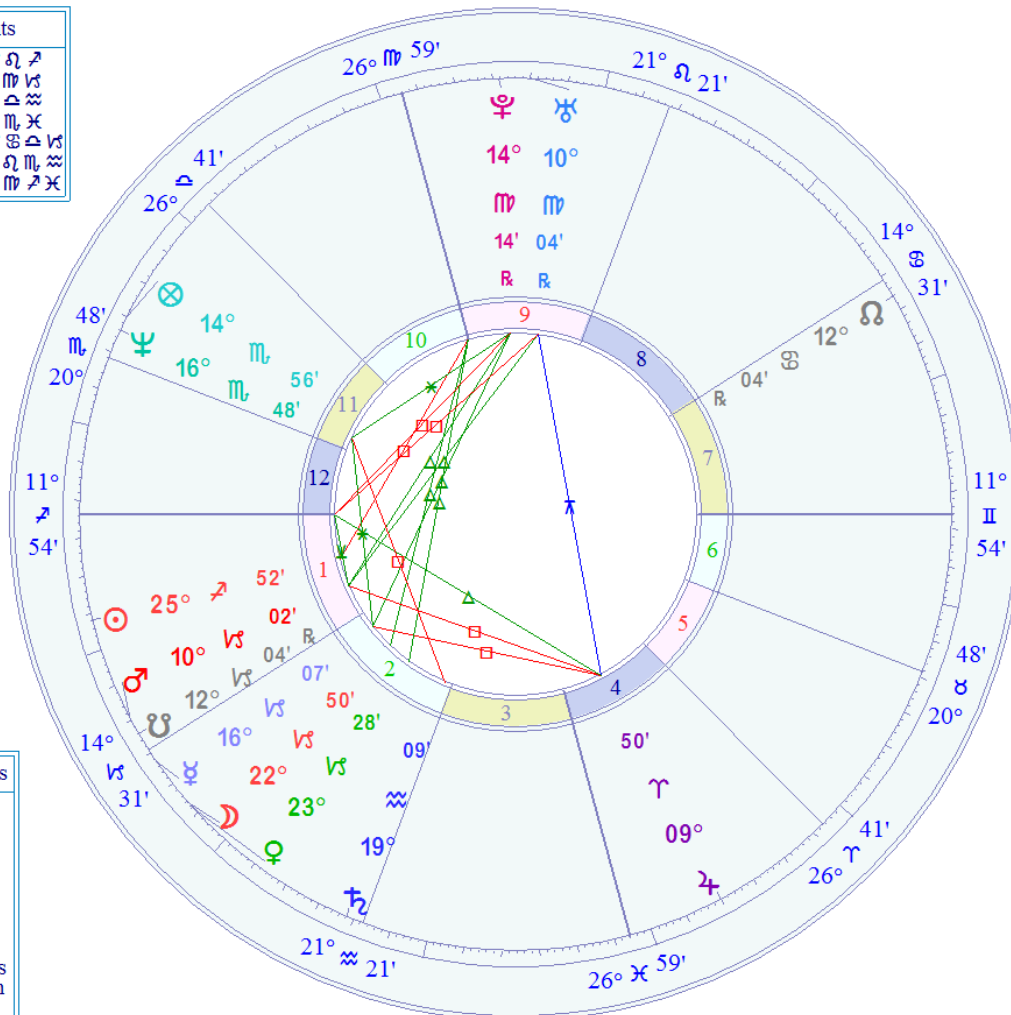
## ***Sis Natal Chart Report***

Brad Pitt  
Shawnee, Oklahoma  
Time Zone: 6 hours West

December 18, 1963  
35N19'38" 96W55'30"  
Tropical Placidus  
NATAL CHART

6:31 AM  
Standard Time

Elements	
Fire	♂ ♀ ♄ ♀
Earth	♁ ♀ ♄ ♀
Air	♂ ♀ ♄ ♀
Water	♁ ♀ ♄ ♀
Cardinal	♂ ♀ ♄ ♀
Fixed	♁ ♀ ♄ ♀
Mutable	♁ ♀ ♄ ♀



Zodiac Signs	
♈	Aries
♉	Taurus
♊	Gemini
♋	Cancer
♌	Leo
♍	Virgo
♎	Libra
♏	Scorpio
♐	Sagittarius
♑	Capricorn
♒	Aquarius
♓	Pisces

Aspect	Planets	Sun/Moon
Orb	Orb	Orb
♌ Conjunction	0° 10'00"	10'00"
♍ Opposition	180° 10'00"	10'00"
♎ Square	90° 8'00"	8'00"
♏ Trine	120° 6'00"	6'00"
♐ Sextile	60° 4'00"	4'00"
♑ Semi-Sextile	30° 2'00"	2'00"
♒ Quincunx	150° 3'00"	3'00"
♓ Semi-Square	45° 3'00"	3'00"
♈ Sesquiquadrate	135° 3'00"	3'00"

Planet	Sign	House
Sun	Sagittarius	1st
Moon	Capricorn	2nd
Mercury	Capricorn	2nd
Venus	Capricorn	2nd
Mars	Capricorn	1st
Jupiter	Aries	4th
Saturn	Aquarius	2nd
Uranus	Virgo	9th
Neptune	Scorpio	11th
Pluto	Virgo	9th
North Node	Cancer	7th
Ascendant	Sagittarius	1st
Midheaven	Virgo	10th

Planet Symbols	
♁	Sun
♂	Moon
♂	Mercury
♀	Venus
♂	Mars
♂	Jupiter
♂	Saturn
♂	Uranus
♂	Neptune
♂	Pluto
♂	North Node
♂	Ascendant
♂	Midheaven

Marcha Fox  
B.S. Physics, Dipl. IAA [www.ValkyrieAstrology.com](http://www.ValkyrieAstrology.com)

The Cosmo Natal Report for

**Brad Pitt**

December 18, 1963

6:31 AM

Shawnee, Oklahoma

Calculated for:

Standard time, Time Zone 6 hours West

Latitude: 35 N 19 38 Longitude: 96 W 55 30

Positions of Planets at Birth:

Sun	25 Sag 52	Pluto	14 Vir 14
Moon	22 Cap 50	N. Node	11 Can 10
Mercury	16 Cap 07	Asc.	11 Sag 54
Venus	23 Cap 28	MC	26 Vir 59
Mars	10 Cap 02	2nd cusp	14 Cap 31
Jupiter	9 Ari 50	3rd cusp	21 Aqu 21
Saturn	19 Aqu 09	5th cusp	26 Ari 41
Uranus	10 Vir 04	6th cusp	20 Tau 48
Neptune	16 Sco 48		

## **Chapter 1: How You Approach Life and How You Appear To Others**

### *Sagittarius Rising:*

High-spirited, enthusiastic, and exuberant, you love adventure, change, exploring new territory, and are not happy confined to the same safe, familiar, secure little world all the time. You have a strong restlessness and yearning for something greater than anything you've yet experienced, and you often live in your dreams and visions for the future. You tend to believe that the grass is greener somewhere else and you like to keep moving, either literally or figuratively. Idealistic and optimistic, you always expect something better ahead. You love to have a goal, something to aim for, but once you achieve it you are on to something else. You are ever on the lookout for new opportunities and you are a gambler, willing to take risks and to break new ground. The possibility of discovering something new is what makes life interesting for you. You have great faith in life and bounce back quickly from disappointment and failure.

Freedom-loving and independent, you cannot tolerate being caged for very long, and friends and loved ones must respect your need for freedom of movement. Binding commitments and responsibilities often weigh heavily upon you and you may resist "growing up" and taking on the limitations of adult life.

You are friendly and outgoing and have a great sense of fun and playfulness. You are also philosophically minded and often quite outspoken about your convictions and beliefs. Sometimes you get carried away with your enthusiasm of the moment and you tend to exaggerate. You are often a big talker, full of big promises, and you are usually pretty convincing. You do everything in a big way, a generous way. You like to have the best, and you heartily dislike stinginess, littleness, or pettiness. Your vision is always large. You are able to perceive the big picture, general patterns and principles, and are well suited to politics, business, higher education or religion.

Other people see you as a good sport and a good friend, but one who is not always consistent and dependable. You may also be seen as a wise person since you do not get bogged down in pettiness and trivialities, and are able to communicate a larger way of looking at situations, one that opens up new potentials. You are a person who believes in miracles, grace, or just plain good luck, someone who never gives up on life, and you inspire and encourage others to keep looking forward.

## Chapter 2: The Inner You: Your Real Motivation

### *Sun in Sagittarius:*



You are a gambler and an adventurer at heart, one who loves to take risks, to discover and explore new worlds, and to take the untried path rather than the safe, reliable one. You are an independent soul, freedom-loving, and often very restless. You need a lifestyle that provides opportunities for travel, movement, change, and meeting new people. A steady routine which offers much in the way of security but little in the way of space and freedom is odious to you.

To you, life is a journey, an adventure, endlessly interesting and rich with possibilities, and it may be difficult for you to decide where to focus your attention and efforts. You probably traveled around and experimented with many different paths before you settled on a particular career. Or you may go from one project to the next, for once the challenge and vital interest is gone, you are very quick to move on. Commitment, discipline, focus, and concentration are not your strong points. You can be irresponsible and disinclined to take on the burdens and limitations of adult life.

An incurable optimist, you have big dreams, aspirations, and hopes for the future and are usually pursuing some distant goal. You have a great deal of faith and trust in life and failures don't crush your spirit. You always bounce back from disappointments, often with another bright dream or scheme. You have a sporting, playful attitude toward life and are philosophical about your mistakes. You have the ability to sense future trends, to see the big picture, and you like to theorize and speculate. However, attending to all of the details and practical requirements of implementing your theories is bothersome to you.

You express yourself in a very open, direct, and straightforward manner and are often blunt and tactless as well. Because you do not take yourself too seriously, you may not realize how deeply your candid statements can wound more sensitive souls. In fact, though you may not realize it, your insensitivity and lack of understanding regarding others' feelings is probably one of your worst faults.

You do enjoy friendship and camaraderie, but you need freedom also and do not do well with a possessive, clinging, or emotionally demanding partner. You are quite generous yourself, and heartily dislike pettiness in others. Someone who shares your ideals, your sense of fun, and your zest for life would be the right companion for you.

*Sun in 1st house:*

You have a clear sense of yourself and therefore convey a strong impression to others of who you are and what you want. Assertive and self-motivated, you can be a leader - one whom others look to for direction - but you compete and often clash with other strong individuals. You feel a need to be in control of your own life and you can be too self-involved, too immersed in your own interests, and oblivious to others at times.

### **Chapter 3: Mental Interests and Abilities**

*Mercury in Capricorn:*

Clear, objective, and realistic, you are unimpressed by exaggerated claims or promises. You insist upon being shown facts to back up any statement you hear, and your natural skepticism often borders on cynicism. You approach problems clearly and rationally and maintain your poise and objectivity even in the midst of critical situations. Anyone seeking your advice is certain to get an unemotional and unbiased assessment of their situation, and you therefore make a good arbitrator or judge. You are thorough, conscientious, and disciplined in your thinking, and have an aptitude for business, organization, and administration. You are also a good strategist, and will plan and patiently follow a realistic course which will lead to your eventual success. Serious-minded and studious, you enjoy quiet time alone for thinking or reading.



*Mercury in 2nd house:*

Your mental skills and intelligence are directed toward practical matters, and you are interested in the tangible effects of any abstract idea or concept. You are very interested in finance, economics, and moneymaking strategies.

*Mercury Conjunct Mars:*

You have a sharp mind and a sharp tongue as well, and love a vigorous discussion or debate. You express your thoughts in a clear, decisive, convincing style. You dislike vagueness and fuzzy thinking, and are quick to point out the discrepancies in another's argument. At times you are verbally aggressive and abrasive to others, and you tend to overstate your case or offend people by your unadorned frankness. You can be an effective spokesperson, lawyer, or salesman. You have an aptitude for writing as well, particularly criticism or satire. You enjoy mental challenges and mental work.



#### *Mercury Trine Pluto:*

Your mind is deep and penetrating and you are interested in anything secret, mysterious, or hidden, including the deeper aspects of the human psyche. You possess an aptitude for private investigation, psychology and research work. You are also drawn to esoteric or occult studies.

#### *Mercury Sextile Neptune:*

You are open and receptive to subjects which defy rational explanation, such as psychic phenomena, mental telepathy, metaphysics, etc., and you could teach these subjects to others. Your mind is imaginative and inspired and you have an aptitude for art and creative writing.

#### *Moon Conjunct Mercury:*

You are a natural psychologist or counselor, interested in the inner motivations, feelings, personal life, and problems of others. You are a sympathetic listener and you also love to discuss (endlessly!) your own experiences and feelings. You tend to be very personal and subjective in your point of view. You have a talent for getting others to talk about their lives, dreams, desires, and other things that are personally meaningful to them. You could be an excellent interviewer, reporter, or biographer. Idle talk and gossip are your vices.

The study of the past - history, archeology, genealogy, etc. - is of great interest to you. Psychology, symbolism, mythology, and languages are also areas that you are drawn to.

### **Chapter 4: Emotions: Moods, Feelings, Romance**

#### *Moon in Capricorn:*



Serious and responsible, you try to carry the world on your shoulders and rarely let others know that you need help and support. You deny or ignore your own emotional needs and feel that others will not accept you if you appear "weak". You are especially uncomfortable with emotional dependency, and will tell yourself and others (even children) not to be a "baby". You need to accept that no one is self-sufficient all the time, and to be gentler with your "childish" emotional needs and wants. To others, you may appear to be rather hard-nosed and tough, with a businesslike attitude toward their personal concerns and feelings. Actually, no one is a truer friend. Your feelings and loyalties run deep, but you often do not let people know how much you care. You also need to learn to relax, enjoy yourself, and play sometimes.

*Moon in 2nd house:*

You are likely to be a great collector of things - a real pack rat in fact - for your belongings give you a sense of security and continuity with the past, which is important to you. Antiques or things with sentimental value from your past are especially dear to you.

You may also cling rather tightly to both money and possessions, keeping them "in the family" rather than sharing freely with those outside of your immediate circle.

*Moon Conjunct Venus:*

No matter how you appear on the surface, you have a very soft heart and others can always appeal to your sympathetic, affectionate side. You especially care about the needs of children, mothers, and families, and you want a love partner who values marriage, home, and family as much as you do. Unkindness or harshness offends you very much.

*Venus in Capricorn:*

You are definitely not one to wear your heart on your sleeve. You care very much about others' opinions and crave love and appreciation as much as anyone, but one would never know it from your reserved and seemingly detached appearance. Casual, superficial relationships don't interest you at all. You are cautious and serious about love and really desire a deep, genuine, lasting love. You are old-fashioned about courtship and love, and will remain faithful to your loved one in good times and in bad.



You may be attracted to persons older than yourself, someone who is emotionally mature and reliable and who can provide the security you desire.

*Venus in 2nd house:*

For you, caring and affection must be expressed tangibly, and you love giving and receiving gifts. You value luxury, comfort, and elegance very highly and appreciate beautiful things. You can be self-indulgent and extravagant. Being overly possessive of people you love and of your belongings is something you need to beware of.

## Chapter 5: Drive and Ambition: How You Achieve Your Goals

### *Mars in Capricorn:*



You are serious about your ambitions, and disciplined, dedicated, and tenacious in pursuing your objectives. Your drive and energy are directed toward practical material accomplishment and achieving concrete results. You also strive to be in a position of authority and social influence; you enjoy being the person who is in command.

You are hard-working and capable of forgoing immediate comfort in order to achieve your long-range goals. You can easily become a workaholic and are very responsible and conscientious about doing a thorough job.

Realistic and pragmatic, you are an excellent strategist. You attain success by formulating a conservative and workable plan and following through with it. You are not a gambler when it comes to attaining your goals; you depend on your own efforts and perseverance rather than good fortune. You have a natural shrewdness and instinct for business or organizational management.

### *Mars in 1st house:*

You are a doer and an achiever. Energetic, courageous, and often impatient, you will forge ahead with your plans regardless of others' reservations. In fact, you often feel other people get in your way and you prefer working on your own. You are active, assertive, and rather competitive as well.

### *Mars Square Jupiter:*

You are enterprising, ambitious, and have a strong desire to succeed in a big way. Ever on the look out for new opportunities and promising new ventures, you are willing to take risks if you sense that something is going to be a winner. No matter how much you accomplish, you never seem to be completely satisfied. You always feel you can do more, and set your sights on another goal. You feel frustrated in limited circumstances, and you will leave secure and reasonably successful situations if they do not offer challenges and potential for growth and expansion in the future. You like to keep stretching your limits, to see how far you can go. Sometimes you over-extend yourself or promise more than you can actually achieve, due to an overly optimistic or overly confident assessment of your own capacities. You relish healthy competition and feel that it spurs you on to even greater achievements.

### *Mars Trine Uranus:*

You are dynamic, decisive, and somewhat impulsive. You respond quickly and spontaneously to challenges, and you enjoy vigorous physical activities that require fast reflexes and a good sense of rhythm and timing. You have an abundance of energy and vitality, and a restless desire to see progress and change - you hate stagnation. You are individualistic and make a good leader, spearheading new projects and inspiring others to act.

### *Mars Trine Pluto:*

You have a strong sense of mission and you instinctively know that to achieve anything great, one must eliminate superfluous activities, and give oneself wholly to the goal one wishes to accomplish. Your zeal, enthusiasm, and clarity of purpose enable you to succeed and to achieve whatever you aim for. You have a strong will, but you are usually quiet and understated about it.

## **Chapter 6: Other Influences**

### *Jupiter in Aries:*

You believe strongly in the power of positivity and in each individual's ability to make life anything desired through one's own initiative and effort. The more you rely on yourself, the better you feel, and you find it difficult to ask for or accept outside help. The joy of competing (and especially winning!) runs deep in you.



### *Jupiter in 4th house:*

You are very hospitable and love having a large, comfortable, gracious home where you can welcome guests as well as family. Your childhood or heritage was very nourishing and supportive, giving you a solid, emotionally secure basis for your life, and you are therefore inclined to share what you have freely and generously.

Investing in your home or real estate is likely to be very rewarding for you.

### *Saturn in Aquarius:*

You have an innate distrust of groups and/or a cynical attitude toward society that may leave you feeling out of step and unable to participate in activities with your peers. Overcoming a sense of aloofness and alienation from others is an important task for you.



### *Saturn in 2nd house:*

Your fears revolve around money and material security, and you work very hard to ensure that your assets are solid. You may be very conservative, even stingy, with your money because you are afraid there won't be enough. You may turn this fear around and become very shrewd about investments and financial matters.

### *Saturn Square Neptune:*

You strive and struggle a great deal with your ideals or spiritual aspirations. You may go through periods of self-denial, asceticism, and serious study of religious philosophy and spiritual practices, or you may lose heart and become cynical about religious ideals, but never quite divorce yourself completely from your idealistic concerns.

### *Uranus in Virgo:*



You are part of a 7 year group of people who employ their skills and creativity to bring about a great deal of practical reform in education, medical care, and other social services. Your innovations are not radical or unusual, but they are usually effective.

Your generation also has a curious mixture of both conservative, ethical people, and rebellious, disruptive people. There seems to be little middle ground for your age group, and you swing to one extreme or the other. The conservative people strive to reinstate strict moral standards, want to swiftly punish criminal behavior, and strive to highlight the importance of old-fashioned values in our lives, laws, and overall life style. On the other hand, the rebellious people of your generation are angry at the established way of doing things and act in a defiant, crude, and coarse manner.

### *Uranus in 9th house:*

You are unconventional, even iconoclastic, in your attitude toward religion, philosophy, and politics. You tend to see traditional religion as restrictive, meaningless ritual with little to offer you, and you're eager to experiment with other, alternative



pathways. You have lots of creative, innovative ideas and you often feel that others are unwilling to take risks and venture out of their deeply ingrained perspectives and views.

*Uranus Conjunct Pluto:*

You were also born during a period that lasted approximately 5 years and is characterized by extreme restlessness and an impatient, dynamic attitude towards life. You are part of a group of people who can be explosive and even violent in their reactions to situations. You do not tolerate being restricted, and your age group rebels with force and anger against oppressive situations.

*Neptune in Scorpio:*

You are part of a 14 year group of people that have very intense psychic sensitivity and imagination. Your age group is very attracted to the strange, weird, and unusual. The sense of the macabre and bizarre is strong, and this is reflected in much of the music, art, and fashions of your age group. Novels and movies with mystery and chilling suspense are also popular with your age group. Emotional depression, drug use, and suicide are likely to be relatively high in your age group. There is also a deep mystical sense, and Eastern religions and meditation are very attractive to your age group.



*Neptune in 11th house:*

You are idealistic in your social and political outlook, and your ideals may impel you to join clubs, organizations, communities of like-minded people, or groups that share your vision and your concerns.

*Neptune Sextile Pluto:*

The entire generation to which you belong has tremendous opportunities for spiritual rebirth and awakening. This will not be forced upon you or precipitated by unavoidable events, rather it comes from an inner yearning and a natural propensity to seek the depths.

### *Pluto in Virgo:*



You are part of a 15 year group of people that are driven by the need to find an ethical standard and a clear sense of what is right and what is wrong. There is a subconscious drive to straighten out all the world's evils and create a world of perfect order. There is a feeling of repulsion to anything ugly, dirty, or grotesque. Oddly enough, there is also often a fascination with these very things that are so distasteful, and often a feeling of hopelessness and despair about the world's condition.

These inner, emotional and conflicting qualities are reflected in the attitudes and life styles of your generation. Most people of your age group are conservative and ethical, and a small minority goes to the opposite extreme and relishes being strange or unusual in appearance, and sloppy or even grotesque in manners and appearance. There seems to be no middle ground for your generation. Usually, the rebellious type of behavior comes out during adolescence, and tends to subside thereafter, and your age group tends to be very conservative in later life.

Your age group is not very good at compromising and tends to have strong ideas about what is right and what is wrong. There is a strong feeling that you must extinguish evil in the world. Certainly, fostering good works is very commendable, but a categorical and simple-minded response to complex issues is not helpful. Your age group will undergo great transformations in attitudes regarding Good and Evil and will swing to great extremes. Your generation will also make great contributions in the areas of medicine and nutrition, ecology, and education.

### *Pluto in 9th house:*

You have strong philosophical views and there are times in your life when you passionately crusade for a cause that you deem noble and of utmost importance. Although your intentions are good, you are not as objective as you think you are, and your views are more colored by personal experiences and concerns than you realize. Nevertheless, you can also be instrumental in bringing about positive change if you can avoid being dogmatic. Also, you may radically change or revise your own personal beliefs, even your most cherished convictions, many times during your life.

## ***Her Natal Chart Report***



Angelina Jolie  
Los Angeles, California  
Time Zone: 8 hours West

June 4, 1975  
34N03'08" 118W14'34"  
Tropical Placidus  
NATAL CHART

9:09 AM  
Daylight Saving Time

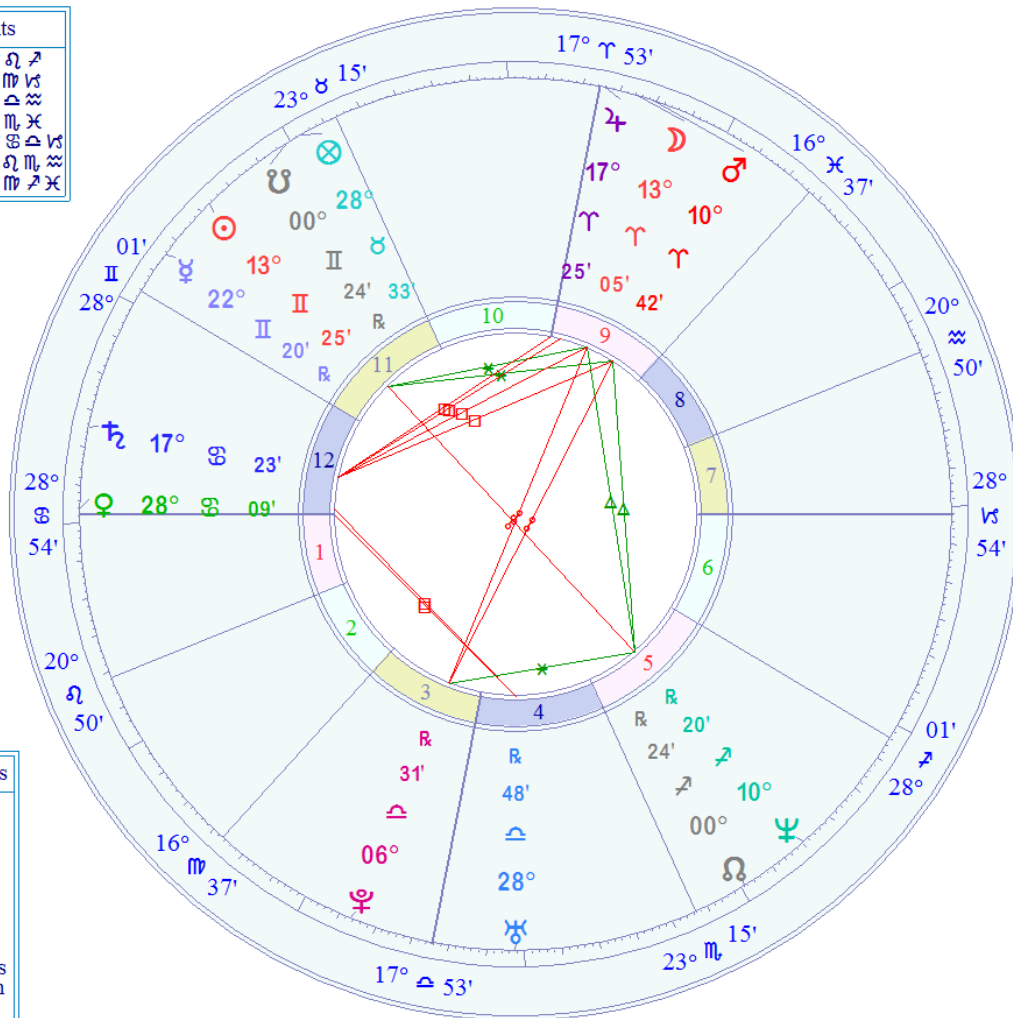
Elements	
Fire	♂ ♀
Earth	♂ ♀
Air	♂ ♀
Water	♂ ♀
Cardinal	♂ ♀
Fixed	♂ ♀
Mutable	♂ ♀

Zodiac Signs	
♈	Aries
♉	Taurus
♊	Gemini
♋	Cancer
♌	Leo
♍	Virgo
♎	Libra
♏	Scorpio
♐	Sagittarius
♑	Capricorn
♒	Aquarius
♓	Pisces

Aspect	Planets	Sun/Moon
Orb	Orb	Orb
♈ Conjunction	0° 10'00"	10'00"
♉ Opposition	180° 10'00"	10'00"
♊ Square	90° 8'00"	8'00"
♋ Trine	120° 6'00"	6'00"
♌ Sextile	60° 4'00"	4'00"
♍ Semi-Sextile	30° 2'00"	2'00"
♎ Quincunx	150° 3'00"	3'00"
♏ Semi-Square	45° 3'00"	3'00"
♐ Sesquiquadrate	135° 3'00"	3'00"

Planet	Sign	House
Sun	Gemini	11th
Moon	Aries	9th
Mercury	Gemini	11th
Venus	Cancer	12th
Mars	Aries	9th
Jupiter	Aries	9th
Saturn	Cancer	12th
Uranus	Libra	4th
Neptune	Sagittarius	5th
Pluto	Libra	3rd
North Node	Sagittarius	5th
Ascendant	Cancer	1st
Midheaven	Aries	10th

Planet Symbols	
☉	Sun
☾	Moon
☿	Mercury
♀	Venus
♂	Mars
♃	Jupiter
♄	Saturn
♅	Uranus
♆	Neptune
♇	Pluto
♊	North Node
♈	Ascendant
♈	Midheaven



Marcha Fox  
B.S. Physics, Dipl. IAA [www.ValkyrieAstrology.com](http://www.ValkyrieAstrology.com)

The Cosmo Natal Report for

**Angelina Jolie**

June 4, 1975

Calculated for 9:09 AM (Precise birth time not known)

Los Angeles, California

Calculated for:

Daylight Savings Time, Time Zone 8 hours West

Latitude: 34 N 03 08 Longitude: 118 W 14 34

Positions of Planets at Birth:

Sun	13	Gem	25	Saturn	17	Can	23
Moon	13	Ari	05	Uranus	28	Lib	48
Mercury	22	Gem	20	Neptune	10	Sag	20
Venus	28	Can	09	Pluto	6	Lib	31
Mars	10	Ari	42	N. Node	0	Sag	53
Jupiter	17	Ari	25				

## Chapter 1: General Personality Characteristics

### *Sun in Gemini:*



You are, in many ways, an eternal child. Your mind is bright, alert, curious, flexible, playful, and always eager for new experiences - and your attention span is often quite brief. You grasp ideas quickly and once your initial curiosity has been satisfied, you want to go on to something else. You crave frequent change, variety, meeting new situations and people.

It may be hard for you to decide just where your talents and true vocation lies, for you have a multitude of interests and are loathe to limit yourself by concentrating on just one. You are easily distracted by all of the other fascinating possibilities. Your curiosity and restlessness propel you into many different experiences in life, and you are willing to taste or try anything once. Doing the same thing over and over again, even if it is something you do well, is real drudgery for you.

You live in your head a great deal - reading, observing, thinking, spinning ideas around - and you need mental stimulation every bit as much as you need food and drink. In fact, if you had to choose between a good book or movie and a good lunch, you would very likely choose the former. You have a creative mind and often live by your wits.

You are also a very social creature, with a strong need to communicate and to interact with people. You enjoy using and playing with words and have a real flair for getting your ideas across in a clever, interesting, articulate manner. Writing or speaking are areas you have talent for.

You also have a rather light and mischievous sense of humor, and often do not take anything too seriously. Though you crave emotional involvement, it is hard for you to achieve it, for you are frequently unwilling to commit yourself to anything, to take responsibility, or to limit your personal freedom and mobility.

Your happiness lies in using your creativity and your language skills to communicate something meaningful, to teach, inspire, or bring people together. You have an unbiased mind and can usually offer a fresh, clear, uncluttered perspective. Your faults are your lack of constancy and persistence, and your tendency to overlook or ignore deep emotional issues and other people's feelings.

### *Sun Opposition Neptune:*

You are extremely sensitive and imaginative, and you can get lost in your dreams, fantasies, and visions. You are attracted to artistic and creative pursuits, the world of color, beauty, and emotion. You are also drawn to mysticism and have deep spiritual

aspirations and yearnings. Gentle and peace-loving, you may lack the will and competitive spirit needed to make your way in the world. You are often impractical and may seek to avoid or escape the hard realities of life.

*Sun Sextile Moon:*

You feel that you have the support of your family or others in your environment for your creative efforts and personal goals, which enables you to act with confidence. You are able to satisfy both your need to be an individual, and your need for caring relationships and a sense of belonging. You are in harmony with yourself and are therefore an effective individual.

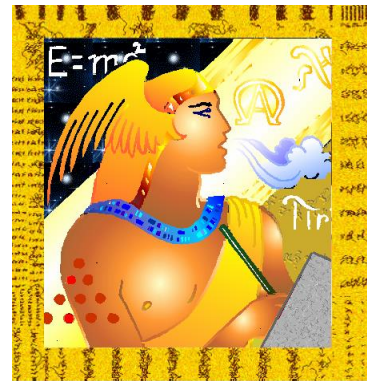
*Sun Sextile Mars:*

You are positive, vital, energetic, active, a go-getter. You enjoy competition, and your initiative and self-confidence make you a winner.

## **Chapter 2: Mental Interests and Abilities**

*Mercury in Gemini:*

You have an extremely active, lively and versatile mind with a multitude of interests and an inexhaustible curiosity about life. You are quick to grasp new concepts and equally quick to lose interest in an idea or project once your curiosity has been satisfied. You like to taste a little bit of everything - concentration and disciplined study are not your strong points. Mentally restless, you may change jobs or locations frequently, or do work that involves movement, travel, and variety.



You have a flair for language, playing with words, speaking, writing, or teaching in an entertaining and informative way. You also enjoy meeting new people, conversing and learning a little bit about them, and you work well with the public.

Sales, advertising, communications, journalism, or public relations are good areas for you. Your ability to be articulate and to communicate well is one of your greatest strengths.

### Chapter 3: Emotions: Moods, Feelings, Romance

#### *Moon in Aries:*



Emotional outbursts are frequent with you due to your fiery temper and emotional impulsiveness. You express yourself very directly and honestly and no one has to guess what your true feelings are. However, you dislike showing any personal weaknesses or needs for support, comfort, and nurturing. You are often impatient with yourself and with others. You abhor emotional dependency and dislike "complainers".

You inspire others to take positive action in their lives by your own enthusiasm and eagerness to meet life's challenges, and are attracted to people who are adventurous, courageous, and independent. You are rather bossy, but you do not like to be with people that you can boss around too much. You enjoy a good fight sometimes. Relationships built upon mutual respect and a good deal of emotional freedom are ideal for you.

You become very cross if you do not have enough vigorous physical activity. You will feel your best if you "do battle" on the tennis or racquetball court (or engage in some other competitive sport) frequently.

#### *Moon Conjunct Mars:*

You feel that you must always be DOING something, and become impatient and irritable if you have to slow down or wait for anything. A stormy home life may be the result of your own tendency to fight for what you want, rather than compromise. You may not realize how competitive you are.

#### *Moon Conjunct Jupiter:*

You are tolerant and forgiving, always ready to overlook mistakes and give others a second chance. You expect the best from people and draw it out of them, and you enjoy making others comfortable and happy. Because of your emotional generosity, your life is rich with friends, and often financial blessings as well.

#### *Moon Square Saturn:*

You often feel that you must do something or be something other than what you are in order to receive approval and acceptance from others. You are very sensitive to criticism and easily feel left out or neglected, and though you may appear cool or distant, you actually care very much about being included. Because you are so sensitive, it may seem easier for you to withdraw into a shell rather than risk the emotional bumps and bruises that can occur when you let others really know you in an intimate, personal way. Your

reserve and caution make establishing a close emotional rapport with others difficult for you, and you become very attached to the few people you consider "real friends". You can gain inner security and strength through periods of solitude if you view them as times to nourish yourself and develop your own interests, rather than as times of loneliness.

*Moon Trine Neptune:*

The beauty and harmony of your surroundings has a very powerful effect on your emotions. You are very sensitive and cannot stand to be in an atmosphere where there is discord or dissonance. Gentle, kindhearted, and peace-loving, you will give or sacrifice much in order to avoid a fight and to "make everyone happy".

*Venus in Cancer:*

Sensitive and sentimental, you are deeply attached to your family, old friends, familiar places, and the past. You are romantic and tender in love, and the remembrance of birthdays, anniversaries, family rituals, and other days of personal significance is very important to you. You seek caring, emotional support, and security in love. You like to be needed, to cherish and protect your loved ones, and you are somewhat possessive of them.



*Venus Square Uranus:*

Your love feelings are easily aroused and your romantic relationships begin with a sudden electric attraction, but they often end abruptly, and you may be in and out of love frequently - especially in your younger years. You crave emotional excitement and need to feel spontaneous and free, so you may avoid making firm personal commitments. Unusual or nontraditional forms of love and relationships appeal to you, and you are attracted to unique, creative, or unstable people.

## **Chapter 4: Drive and Ambition: How You Achieve Your Goals**

*Mars in Aries:*



You have a warrior's attitude - decisive, courageous, and bold. You tend to always want to DO something, even when waiting for an appropriate time or not doing something (simply letting things alone to resolve themselves) would actually be more efficient and effective. You absolutely cannot tolerate being passive or even patient about getting what you want. You feel that it is up to you to take the initiative and you go after your goal or desire very aggressively.



You are also self-reliant, do not depend on others to do things for you or help you along, and you are often irritated when other people offer advice or direction. Cooperation rarely comes easily to you. You are willful and can be quite oblivious to others' desires or feelings when you are pursuing something you want. You are highly competitive, enjoy a challenge or a good fight, and may be downright pugnacious at times. Abounding in energy and enthusiasm at the start of a new venture, you need a very positive response and encouragement to sustain your interest in it. If a project isn't successful rather quickly, you are apt to drop it and move on to something else, rather than rework or refine it. The desire to blaze a trail, to do things in a new way - YOUR way - is very strong in you. You can discover, invent, and initiate new things, but are impatient and may lack the stamina and perseverance needed to complete a long-term project.

*Mars Conjunction Jupiter:*

You have a positive, "can-do" attitude and tackle life's challenges with relish. You are self-confident and have a strong will to succeed, to see how much you can do and how far you can go. No matter what you accomplish, you do not rest on your laurels. You want to keep on going, to do even bigger things. You are forward-looking, enterprising, and enthusiastic about new projects. You are not happy in situations that do not offer you challenges and the potential for growth and expansion in the future - no matter how secure or satisfactory they may be in other respects. You enjoy competition, but you compete mostly with yourself, to see how much of your vision and potential you can really achieve. You make a good leader, inspiring courage and confidence in others. You usually enjoy good health and high vitality.

*Mars Opposition Pluto:*

You have a powerful will and when you want something, you pursue it passionately and relentlessly until you achieve it. You may be so driven by your desire that you lose all objectivity. You often become compulsive, even obsessed, with doing or achieving something, no matter what the costs or how hard you must work for it. Your forcefulness may be veiled or subtle, for often you do not reveal your real aims and intentions to others until they cross you. Intense power struggles and relationships with a strong dominance/submissiveness theme are likely. You have enormous energy reserves, and are capable of extraordinary effort and great achievement if you use your energies for constructive purposes.

*Mars Trine Neptune:*

You dream up creative solutions to problems and take an imaginative, unusual approach to getting a job done. When difficulties arise you prefer to avoid conflict and confrontation in favor of more peaceful or subtle methods of resolving problems. Working to help others or for a cause that transcends your own narrow, personal interests

is satisfying for you. You have an artistic flair and appreciate the colorful, unique, or strange.

## Chapter 5: Other Influence

### *Jupiter in Aries:*



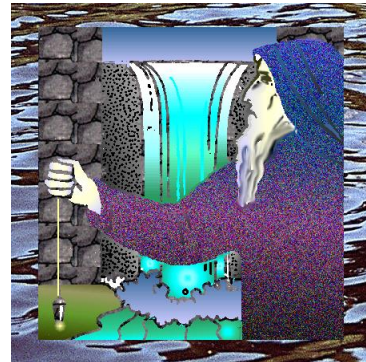
You believe strongly in the power of positivity and in each individual's ability to make life anything desired through one's own initiative and effort. The more you rely on yourself, the better you feel, and you find it difficult to ask for or accept outside help. The joy of competing (and especially winning!) runs deep in you.

### *Jupiter Square Saturn:*

You have an inner conflict between idealism, hope, and faith in the future versus doubt and oppression by limitations and practical realities. You need to develop discipline and patience in order to achieve your aspirations. You will grow by learning to accept frustration and to persevere in spite of obstacles.

### *Saturn in Cancer:*

You fear becoming emotionally dependent upon others, and may distance yourself or deny your needs for closeness and intimacy so that you won't be vulnerable to rejection or abandonment. On the other hand, you may cling excessively or need constant reassurance from loved ones and family. Developing a deep, inner sense of security, as well as the ability to give and receive nurturing are important tasks for you.



### *Uranus in Libra:*



You are part of a 7 year group of people who strive for greater equality in relationships. You treat parents, children, and spouses much more like friends and equals than other generations do, and many of you will experiment with alternative marriage styles that allow for greater freedom and equality in relationships.



### *Neptune in Sagittarius:*

You are part of a 14 year group of people that are extremely idealistic and farsighted in their dreams. Your age group is very liberal and expansive in outlook, and consequently churches become much more flexible and more eclectic in their approach during your life time. Religions that do not adapt to the broad-minded attitude of your age group simply are unable to attract very much interest and involvement from you.



A great deal of metaphysical musing and speculation is evident in your age group, and there is a very strong interest in all manner of psychic phenomena, UFO's, prophecy, etc. This interest will open many new doors and insights, but will also often lead to a great deal of fantasizing and speculation that is taken more seriously than it should be.

### *Neptune Sextile Pluto:*

The entire generation to which you belong has tremendous opportunities for spiritual rebirth and awakening. This will not be forced upon you or precipitated by unavoidable events, rather it comes from an inner yearning and a natural propensity to seek the depths.

### *Pluto in Libra:*



You are part of a 12 year group of people who are deeply interested in personal relationships. Your age group has a deeply-rooted yearning to see people relating and communicating with each other effectively and harmoniously. There is little egotism and a willingness to hear the other person's side of the story and a readiness to compromise and arbitrate different points of view. In fact, the need for harmonious, peaceful relationships is so strong that there is a tendency to overlook real differences and to focus only on the similarities in an attempt to bring different parties into harmony with each other.

Interest in psychology and sociology is high in your age group. There is a tremendous heightening of awareness of social skills. Your age group will experiment with different marriage styles, family relationships, and even business relationships in an attempt to bring fair treatment and effective communication between people. Interest and appreciation for other cultures is also strong, and your age group will work hard to preserve and support the cultural heritage of all ethnic groups.

Your strong yearning for equitable and harmonious relationships is also reflected in major advancements in trade agreements, arms control, and international cooperation that

are designed and implemented by your generation. These agreements and policies foster a much safer and more cooperative environment for all, although there is also a tendency for greedy individuals to take advantage of the conciliatory atmosphere and twist situations to their own ends.

In short, you are part of a generation of individuals who are deeply interested in other people; you are a humanistic and humanitarian group. You will struggle and experiment with personal relationships, and forge new models for how people can relate as friends, family members, and members of nations as well.

## ***Cosmo-Compatibility Report***

Inner Wheel:  
**Brad Pitt**  
 Shawnee, Oklahoma  
 Time Zone: 6 hours West

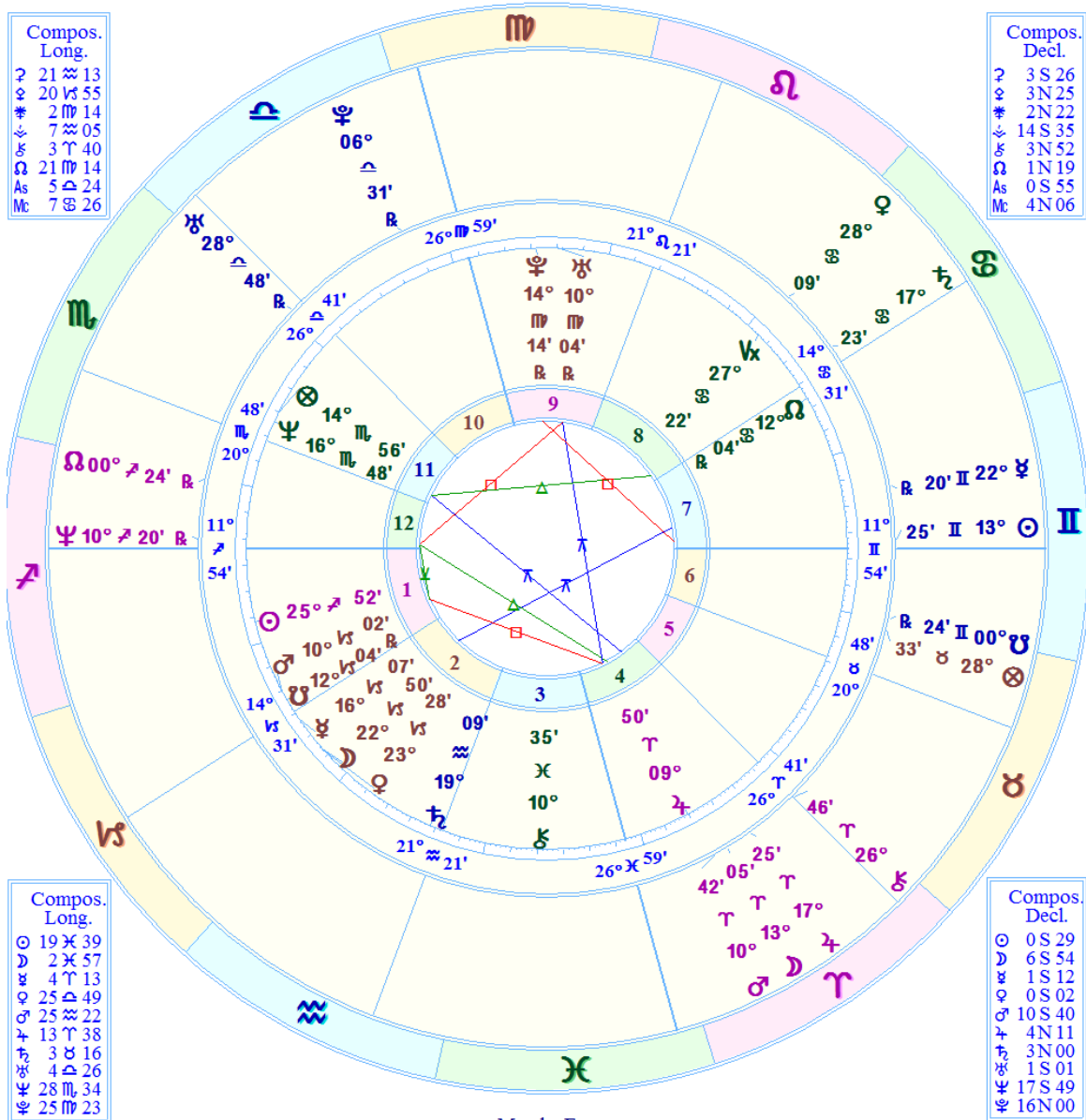
December 18, 1963  
 35N19'38" 96W55'30"  
 Tropical Placidus  
 NATAL CHART

6:31 AM  
 Standard Time

Outer Wheel:  
**Angelina Jolie**  
 Los Angeles, California  
 Time Zone: 8 hours West

June 4, 1975  
 34N03'08" 118W14'34"  
 Tropical Placidus  
 NATAL CHART

9:09 AM  
 Daylight Saving Time



Marcha Fox  
 B.S. Physics, Dipl. IAA www.ValkyrieAstrology.com

The Cosmo Compatibility Report for

**Brad Pitt**

and

**Angelina Jolie**



Data for Brad Pitt:  
 December 18, 1963 6:31 AM  
 Shawnee, Oklahoma  
 35 N 19 38 96 W 55 30  
 Standard time observed  
 Time Zone: 6 hours West

Data for Angelina Jolie:  
 June 4, 1975 9:09 AM  
 Los Angeles, California  
 34 N 03 08 118 W 14 34  
 Daylight Savings Time observed  
 Time Zone: 8 hours West

Sun	25 deg 52 min Sagittarius	Sun	13 deg 25 min Gemini
Moon	22 deg 50 min Capricorn	Moon	13 deg 05 min Aries
Mercury	16 deg 07 min Capricorn	Mercury	22 deg 20 min Gemini
Venus	23 deg 28 min Capricorn	Venus	28 deg 09 min Cancer
Mars	10 deg 02 min Capricorn	Mars	10 deg 42 min Aries
Jupiter	9 deg 50 min Aries	Jupiter	17 deg 25 min Aries
Saturn	19 deg 09 min Aquarius	Saturn	17 deg 23 min Cancer
Uranus	10 deg 04 min Virgo	Uranus	28 deg 48 min Libra
Neptune	16 deg 48 min Scorpio	Neptune	10 deg 20 min Sagittarius
Pluto	14 deg 14 min Virgo	Pluto	6 deg 31 min Libra



### *Brad's Sun in Sagittarius and Angelina's Sun in Gemini:*

Both of you are curious individuals, rather restless and on-the-go. You inspire one another to learn, grow, take chances, and make changes, and you feel hopeful and positive together. If nothing else, you always laugh at life's ironies and at yourselves, when you are together.

Both of you thrive on freedom, mental stimulation, and variety.

One difference between you is that Brad has convictions, beliefs, ideals, or ethical principles that are very meaningful to Brad, while Angelina may not agree or feel very strongly one way or another about them.



### *Brad's Moon in Capricorn and Angelina's Moon in Aries:*



Your instinctive emotional responses, habitual feelings, and emotional tone, and ways of coping with challenges are very different. Angelina's initial response is often anger or indignation. Angelina takes a positive, enthusiastic stance and wants to "do battle" with challenges. Brad tends to withdraw in order to formulate a strategy for dealing with the problem. Brad downplays the feelings and emotions evoked by the situation, focusing instead on "what needs to be done" - the concrete aspects of the situation.

Angelina is spontaneous and direct in expressing desires and feelings; Brad is careful and controlled, often quite subdued. Angelina tends to be a bit self-centered and expects to get what he/she wants, whereas Brad often feels undeserving of pleasure, comfort or the fulfillment of desires. Brad instinctively feels that hard work will be necessary to



achieve anything (emotional satisfaction or personal ambitions). Angelina instinctively believes "I can". Brad is a doubter, and this can be a problem between you. Positively, Brad can help Angelina gain some emotional distance and detachment from irritating situations because Angelina tends to take everything personally and Brad does not.

Both of you are also rather emotionally self-sufficient and enjoy times to yourself.

*Brad's Sun Opposition Angelina's Mercury:*

Lively exchanges of ideas are common between the two of you. Fortunately, you understand each other well, but unfortunately you sometimes have opposite opinions and perspectives on an issue. Despite your differences, you work together very well in practical matters, planning, organizing, developing or communicating ideas, and your differing viewpoints are not likely to be a serious problem.



*Angelina's Sun Square Brad's Uranus:*



When the two of you get together, you make a lot of noise, and there is lots of excitement. There is a strong element of unpredictability and spontaneity as well and you enjoy improvising new ideas and playing together. Because there is a loose, spontaneous quality to your relationship, you find that very often you can not depend on each other and it is difficult for the two of you to focus on mundane, tedious, or onerous tasks together. This is a good relationship for exploring new possibilities and interests and for spurring each other to become more spontaneous, independent, and creative, but a difficult relationship if dependability and commitment to each other is a high priority.

*Angelina's Sun Square Brad's Pluto:*

Your relationship is intense and complex. You engage in deep, intense discussions and encounters that unveil your innermost thoughts, feelings, goals, hopes, fears, and ambitions. This is not a superficial relationship! You are very uninhibited with each other, and you open up to each other more readily than to others. Be wary of power struggles, however, as Brad, in particular, may be tempted to manipulate and control Angelina. Also, either of you may feel threatened, embarrassed, or disempowered by revealing so much of yourself to the other, and consequently feel the need to be secretive and competitive with each other. You have a profound influence upon one another, for good or ill.



*Angelina's Moon Conjunct Brad's Jupiter:*

You both really enjoy each other's company. You put each other in a good mood and an optimistic, friendly, jovial atmosphere develops when you get together.



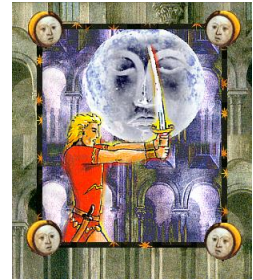
*Angelina's Moon Square Brad's Mercury:*



Brad needs to guard against the tendency to be critical, unsympathetic, and overly analytical of Angelina's feelings, personal tastes, and habits. Brad may feel that Angelina is overly sensitive to criticism, and refuse to acknowledge responsibility for the problem as well. Petty annoyances, minor disagreements, and bickering can be avoided only if you both learn to listen sympathetically and to communicate clearly with each other.

*Angelina's Moon Square Brad's Mars:*

You tend to become impatient and inconsiderate to each other. This relationship will work only if both of you are tough-skinned and do not get your feelings hurt easily. You are capable of achieving much together and you can motivate each other, but guard against the tendency to be impatient and try to force things prematurely. Avoid also the tendency to be pushy with each other.



*Brad's Mercury Opposition Angelina's Saturn:*



The flow of communication between you is often restricted, and very frustrating, especially for Brad. Criticism and nitpicking can be a real problem for you. Angelina wants Brad to be very clear, very precise, and will constantly interrupt Brad if there are inconsistencies in what Brad is saying. Often you simply do not share the same interests or are just not on the same wavelength. Communication of practical, serious affairs is usually good, but any topic involving intuition or speculation is not likely to get very far. Because you communicate well only about certain topics, this relationship can work well if it is a professional association for specific purposes, but beyond these boundaries, communication can be exceeding difficult.

*Brad's Mercury Square Angelina's Jupiter:*

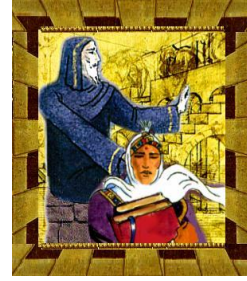
This relationship has a marked effect on the overall attitudes and beliefs of both of you, but particularly of Brad. You challenge each other's religious, political, and philosophical beliefs. You may experience differences of opinion that are difficult to reconcile. You are also inclined to take risks together and speculate, sometimes foolishly.





*Angelina's Mercury Trine Brad's Saturn:*

You work together well on practical problems. You help each other refine and clarify your ideas, and help "edit" each other's work. Consequently you make a very effective team in business affairs and important or exacting work.



*Brad's Venus Opposition Angelina's Venus:*

You appreciate each other and are able to see what is beautiful in one another, even when your friend is troubled or facing difficulties. Though there are significant differences in your approaches to feelings and friendship, and also in your artistic tastes and the ways you enjoy yourselves, you like each other so much that you're motivated to find ways to cooperate, harmonize, and meet one another halfway.

*Angelina's Mars Conjunct Brad's Jupiter:*



You spark each other's ambitions and enterprising spirit, and you enjoy planning and designing ventures. You are able to jointly follow through to successful completion of your goals. Brad gives Angelina confidence and encouragement to charge ahead, while Angelina stimulates Brad to act decisively to actualize Brad's dreams. You are likely to undertake several joint ventures as well as other individual efforts that are greatly assisted by your friend. Occasionally you take foolhardy risks and are overly zealous and unrealistic in your hopes, but your dynamic blending of energies can also result in outstanding accomplishments as well.

*Brad's Mars Square Angelina's Mars:*

You periodically find that you frustrate each other when attempting to work jointly on a project. The problem arises because your approach to work is very different. Very often you will find that you must work on a project separately as successful joint effort is impossible. Fighting, provoking, driving, or pushing one another can be problems for you. There is a great deal of irritation and stress between you at times. At least there is no lack of fire in your relationship!

*Brad's Mars Square Angelina's Pluto:*

You inspire, vitalize, and energize one another and you can accomplish much together, but you can easily become overly zealous, even fanatical, in your pursuits. It is also likely that your objectives will sometimes be different and you will feel at cross-purposes with each other. You often end up in power struggles, being very competitive with each other, and trying to manipulate or dominate one another. Angelina, especially, can override or undermine Brad's efforts.

